

**Newsletter 1st December 2023**

For Pupils, Parents, Carers,  
Governors and Friends

**What is happening at Beechview**

**Christmas Tree**

A big thank you to Mr and Mrs Holland for getting us in the Christmas spirit. They have managed to organise some very generous donations from Rob at The Alarm Surgery and a family friend, who wishes to remain anonymous. These donations were given to enable us to buy a welcoming, fibre-optic Christmas tree for our reception area and also a fantastic, real tree for our school hall. Don't they look lovely!



**Christmas Production**

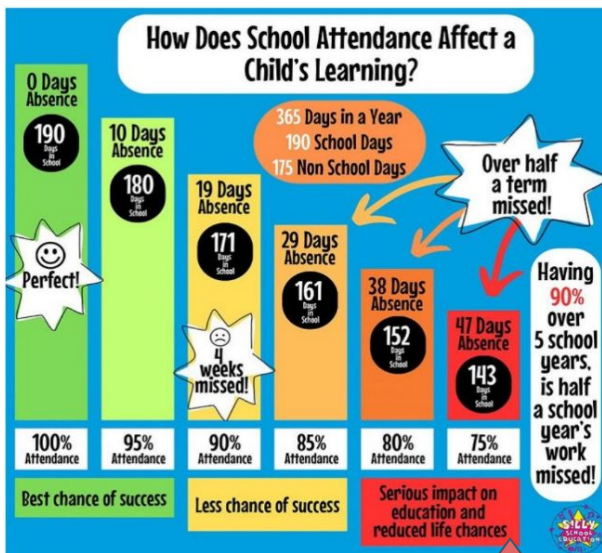
On Friday 15th December, Year 3 and 4 are putting on a Christmas production extravaganza called Lights, Camel, Action! They're being very tight lipped about it except for the hint: think Strictly... If last's years was anything to go by, it's going to be amazing. At the moment, they're putting in a lot of hard work rehearsing and props are being made. A great team effort! We look forward to seeing the performers in two weeks time. Unfortunately, not everyone will be able to see it. The performance is only open to Y3 and 4 parents and will begin at 2pm. Don't worry there will be a carol concert for everyone the following week. We will let you know more nearer the time.

**Lateness**

Please could we politely remind you that our school day begins at 8:45am. Gates are open from 8:40am and children are walked to their class by staff from the playground promptly. Over the past week we have experienced a higher number of late arrivals than usual.

When a child arrives late it can be quite disruptive for them and the rest of the class. We understand that sometimes lateness is unavoidable but if this is an ongoing difficulty for you and your family, please get in touch and we will endeavour to help where we can.

Please know that even lateness can impact the progress made in a child's learning. We include an infographic to help explain the impact missing school can have.



**Update from the Headteacher**

This week we had parents evening with 84% of meetings going ahead at the allotted time - so we thank you all for that. It was apparent the virtual and in-person split was reasonably equal and having that flexibility makes it work for everyone. It was lovely to hear some of the conversations, see the smiling faces and gather all the feedback for next time. We will send out a parent survey shortly to capture even more feedback to further improve.

Some parents that attended the school, may have noticed some of the electrical contractors on site completing the rewiring. We are getting close to completion of that, which is very exciting, with many staff and pupils already noticing the better lighting and more efficient electrical setup. Once again, I cannot commend the pupils and staff enough for taking some of the disruption completely in their stride, ensuring it does not affect the learning happening.

We are now entering December, so the lead up to Christmas is soon to be in full swing, with Christmas dinners and productions all planned in. We look forward to sharing this magical time with the children and yourselves. Along with the change of month, there seems to be a dramatic change in the weather with frost making an appearance. Please keep wrapped up and warm, and stay safe.

**Yours Sincerely,  
Mrs Parry-Woolner**

**Headteachers Awards**



24/11/23



01/12/23

**Important dates this term:**

- Weds 13th Dec** - Christmas Lunch & Wear a Christmas Jumper
- Fri 15th Dec** - Y3 & 4 Nativity Performance 2pm
- Mon 18th Dec** - Whole School Christmas Performance 2pm
- Tues 19th Dec** - **School Finishes at 1:15pm**
- Weds 20th Dec - Weds 3rd Jan** - Christmas Holidays
- Thurs 4th Jan/ Fri 5th Jan** - INSET DAYS
- Mon 8th Jan** - School Starts
- Mon 8th/ Tues 9th** - 'We Are Artists' Art Gallery (After school)
- Tues 6th Feb** - Safer Internet Day

**Something to celebrate!**

**The most dojo points collected:**

**Week beginning 24th November:**

- 3H- Jude
- 30 - Ollie
- 4C- Sabrina
- 4E- Akshita
- 5H- Ethan
- 6M- Shayla-Rai
- 6P- Tamsin-

**House: Courage**

**Week beginning 1st December:**

- 3H- Eliza
- 30 - Abeera
- 4E- Victoria
- 4C- Dotti
- 5H- Ethan, Louie
- 6M- Israel
- 6P- Lottie

**House: Courage**



**Weekly Attendance Champions:**

- 24/11/23 **Maple 96.87%**
- 01/12/23 **Maple 95.51%**

**Whole school Attendance this week:**

**90.63 %**  
Last week: 85.81%

**Reading Champions:**

Both **6 Pine** and **6 Maple** both achieved over **93%** of their class reading - fantastic effort and well done!



**Stars of the Week**

24/11/23



01/12/23

